

Pontsteiger



Pontsteiger
Amsterdam, Westerpark

238 apartments
2000 m² restaurant + hotel suites
underwater parking garage (338 cars)

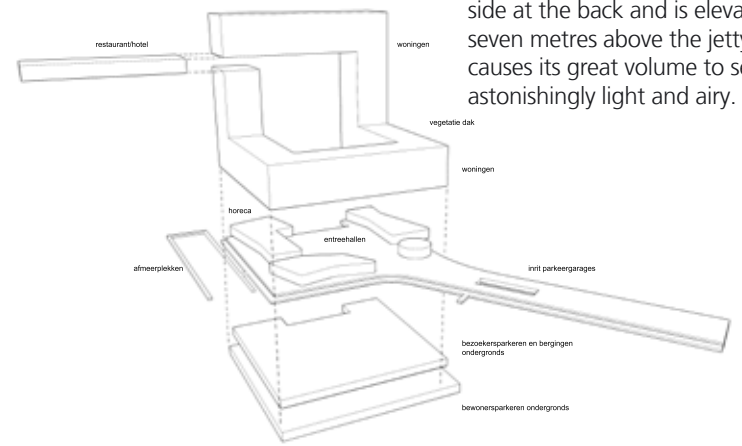
client: developers combination
Pontsteiger: De Principaal /
BouwfondsMAB / Ymere / Rochdale

start construction: 2011

The location near the timber docks Houthavens is a hub within the water city of Amsterdam, and the ferry is to become an important link between the new municipal districts. A contemporary city gate at this junction in the IJ is a fitting form for this.

The Pontsteiger design has the spectacular view on all sides as its theme. In order to symbolize its unique position in the water city, the building has the form of a gate when seen from a distance.

As one approaches, one sees that the Pontsteiger has the form of a chair. The chair has an open side at the back and is elevated seven metres above the jetty. This causes its great volume to seem astonishingly light and airy.



gelauff architecten arons en gelauff architecten arons

